

# Building Profile

## Alabama Site Selection Database

### Dozier Manufacturing Co.

City: Dozier

County: Crenshaw



#### General Building Data

<b>Total Size</b>	25,000 sq.ft.
<b>Space Available</b>	25,000 sq.ft.
<b>Multi-tenant</b>	No
<b>Building Dimensions</b>	
<b>Number of Buildings</b>	1
<b>Number of Floors</b>	1
<b>Largest Production Area</b>	25,000 sq.ft.
<b>Office Area</b>	
<b>Building Expandable</b>	
<b>Expandable to</b>	
<b>Floor Thickness</b>	
<b>Total Acreage</b>	5
<b>Additional Available</b>	
<b>Ceiling Height</b>	Eave: 10 ft. Max: 15 ft.

<b>Bay Spacing</b>	Length: Width:
--------------------	-------------------

<b>Air Conditioned</b>	Yes
<b>Heated</b>	Yes

<b>Cranes</b>	Number of Cranes: Capacity of Largest: Under Hook:
---------------	--

<b>Truck Docks</b>	Dock Level: 2 Drive In:
--------------------	----------------------------

<b>Year Built</b>	
<b>Last Expansion</b>	
<b>Refrigerated Area</b>	
<b>USDA Approved</b>	
<b>Sprinklers</b>	No

<b>Construction Material</b>	Primary: Metal Secondary:
------------------------------	------------------------------

<b>Parking Paved</b>	Yes
<b>Number of Cars</b>	

<b>Zoning</b>	Light Industrial
<b>Previous Use</b>	Industrial
<b>Previous Use Description</b>	industrial

<b>Building Id: 5898</b>	
<b>Street Address</b>	18684 Andalusia Hwy

<b>Nearest City</b>	Dozier
<b>Within City Limits</b>	Yes
<b>Zip Code</b>	36028
<b>Latitude</b>	31.490379
<b>Longitude</b>	-86.374269
<b>Located in Industrial Park</b>	No
<b>Park Name</b>	
<b>Within Enterprise Zone</b>	
<b>Within Favored Geographic Area</b>	
<b>Within Renewal Community</b>	

#### Transportation

<b>Rail Service</b>	Provider: Track Status: Not Specified Provider #2: Track Status: Not Specified
---------------------	---

<b>Waterway</b>	Dock Facility: Not Specified
-----------------	------------------------------

<b>Nearest Commercial Air City</b>	Montgomery, AL Miles to Nearest Service:
------------------------------------	---

#### Highways

<u>Highway Type</u>	<u>Highway Name</u>	<u>Miles to Access</u>	<u>Four Lane</u>
Alabama Highway	29	0	No

This information has been secured from sources we believe to be reliable; however, we make no representation or warranties, expressed or implied, as to the accuracy of the information.

# Building Profile

## Alabama Site Selection Database

### Dozier Manufacturing Co.

City: Dozier

County: Crenshaw

#### Utilities

##### Natural Gas

Provider: SE Alabama Gas District  
Status: Not Specified  
Size of Main:  
Main PSI:

##### Electricity

Provider(s): Covington Electric Co-op  
Status: Existing  
Amps:  
Phase:  
Voltage:

##### Water

Provider: Dozier Water Works  
Status: Existing  
Size of Main:

##### Telecommunications

Service Provider: CenturyLink  
Fiber Optics:  
Redundancy:  
xDSL Available:

##### Sewer

Provider: City of Dozier  
Status: Existing  
Size of Main:

#### Price

<b>Base Rent (Annual)</b>	\$36,000.00
---------------------------	-------------

<b>Base Rent</b>	Total
------------------	-------

<b>Sale Price</b>	\$250,000.00
-------------------	--------------

	Total
--	-------

#### Negotiable

<b>Date Quoted</b>	Jun 29, 2012
--------------------	--------------

#### Price Comments

Owner might provide owner financing under right circumstances.

#### General Comments

*Building information is current as of 6/29/12*

# Building Profile

## Alabama Site Selection Database

**Dozier Manufacturing Co.**

City: Dozier

County: Crenshaw



This information has been secured from sources we believe to be reliable; however, we make no representation or warranties, expressed or implied, as to the accuracy of the information.

Economic Development Partnership of Alabama  
[www.edpa.org](http://www.edpa.org)

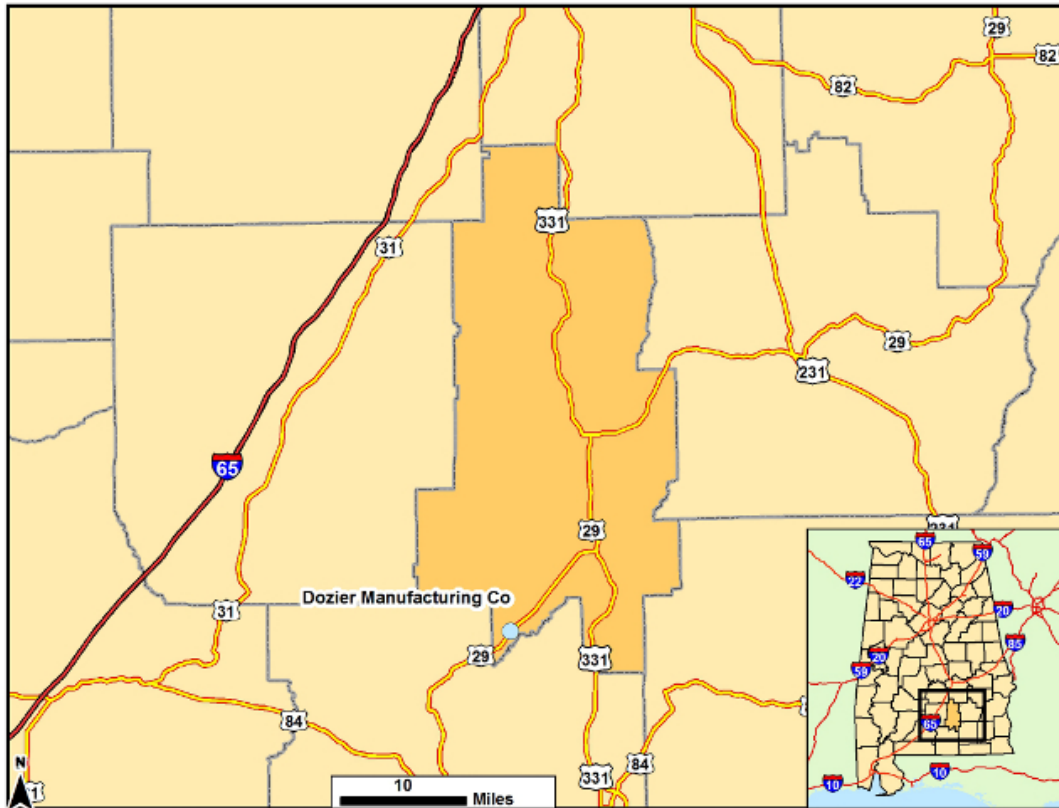
# Building Profile

## Alabama Site Selection Database

**Dozier Manufacturing Co.**

City: Dozier

County: Crenshaw



This information has been secured from sources we believe to be reliable; however, we make no representation or warranties, expressed or implied, as to the accuracy of the information.

Economic Development Partnership of Alabama  
[www.edpa.org](http://www.edpa.org)